

Installation guide

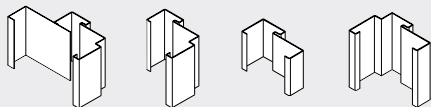
For steel doors from Hellbergs



Before you begin

Complete the installation quickly by preparing beforehand and using the correct tools.

DOOR JAMB AND DELIVERY



FRAME A FRAME B FRAME C FRAME D

First, check what jamb is included with your delivery (it will show on your order confirmation and delivery note). Read the instructions carefully before you start.

Once you've read the instructions and checked that you've got all the parts needed, it is time to begin the

Check your delivery and ensure the following is included.

- ▶ Door leaf and frame (header and jambs) according to delivery note
- ▶ Installation kit in plastic bag

Only included with frame A:

- ▶ Counter frame: 2 jambs, 1 head jamb

Contents in bag

- ▶ Plastic cover caps
- ▶ Installation guide

FITTINGS

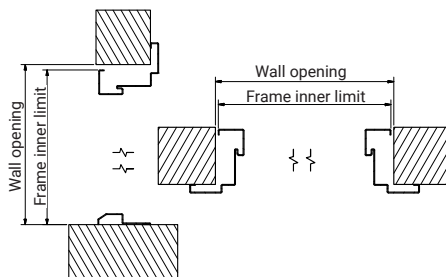
| Type of wall | Screws |
|------------------|--|
| Wooden beam | Concrete screw 7.5 x 70 mm |
| Concrete & brick | Concrete screw 7.5 x 70 mm Dowel 10 x 50 mm |
| Steel beam | Steel screw 6.3 x 38 mm |

Tip! Make your set up easy by purchasing Hellberg screws and mounting kit.

MEASUREMENT & TOLERABLE DISTANCE

Always ensure the wall is the correct dimensions.

Please see the measuring help below.



If the actual dimension is greater or less than the tolerances in the table below, the wall opening shall be adjusted in such a way that the fire resistance properties are not affected.

| Tolerance | | | |
|-----------|----------------------|------------------|------------------|
| Module | Hole in wall nominal | Hole in wall max | Hole in wall min |
| W x H | W x H | W+14 x H+10 | W0 x H-5 |
| 10 x 21 | 1000 x 2100 | 1014 x 2110 | 1000 x 2095 |

WHAT YOU'LL NEED

- ▶ Installation fittings suitable for wall
- ▶ Spirit level
- ▶ Drill / screwdriver
- ▶ Slotted chisel
- ▶ Hexagon spanner, 12 mm (for frame sleeves)
- ▶ Drift (non-combustible insulation*)
- ▶ Sealing compound suitable for rating.
- ▶ Grease for hinges

* Fire rating needs value A1, according to standard
EN 13162:2012 + A1:2015 (EN 13501-1)

Type approval or CE-marking is not valid if the product has been modified. In the event of changes to the design of the door Hellbergs cannot guarantee that the stated properties will be maintained. An installation-audit must be completed and archived by the end customer and installer.



INSTALLATION INSTRUCTIONS STEEL DOOR WITH FRAME



Sida 4-6

INSTALLATION INSTRUCTIONS - STEEL DOOR (USING FRAME A, B, C & D)



1
Ensure the floor is level, if the floor isn't level, raise the jamb to be level with the lowest point of the opposite jamb.



2
The frame is insulated when delivered.



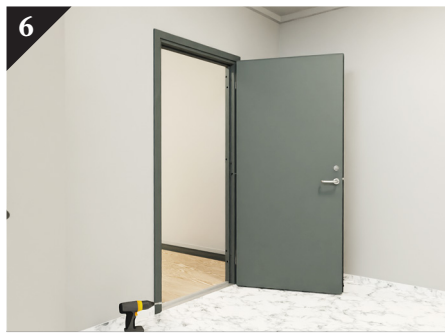
3
Centre the frame in the wall opening and unscrew the frame sleeve facing the wall opening, with a hexagonal wrench (12 mm). If overtightened the frame will bow. Check that the frame is level both vertically and horizontally.



4
Attach the frame at the top and bottom on the hinge side. Attach each screw centered in the sleeve. (If needed pre-drill with suitable dimension drill). Ensure the frame is level.



5
Add grease to the top of each hinge-base.



6
Attach the door leaf to the mounted frame.



Ensure that the door is spaced evenly in the frame. Test by opening and closing the door. Spacing in front, 3-4 mm (closed door). Spacing above, 2 mm.



If needed the door can be adjusted sideways by tightening, alternatively by releasing the frame inserts.



Drill holes for attaching the jamb on the stop side. Attach the frame with screws. Attach frame in remaining frame sleeves, ensure the screw is centered.



Fill the slots /gaps with drift (see page 2 for rating requirements)



Attaching counter frame: Install by following separate instructions on page 13. Attach with self drilling screws into designated holes in the jamb.



Attach plastic cover caps to cover the premade holes.



Adjust the striker if needed. When installing a double door check that the locking mechanism fits within the designated hole in the header and threshold.



Attach the threshold to the floor.



Security doors: Release the screws above and below the lock stile.

Do not overtighten the screws, it will bend the sides of the jamb.



For doors with smoke resistance rating and sound reduction, add a sealant suitable for the rating between frame and wall along with threshold and floor.

View installation

Scan the QR-code to view a Swedish video of the complete installation.





SEALING STRIPS

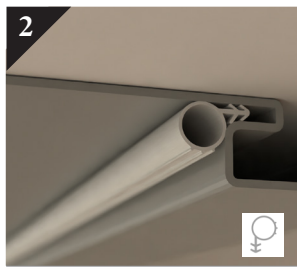


Page 8-9

Sealing strips - single door



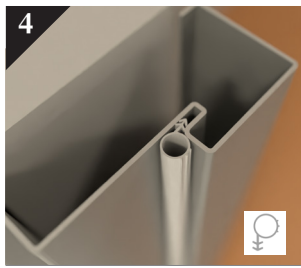
Sealant strips are attached to the head lengthwise between the inside edges of the frame.



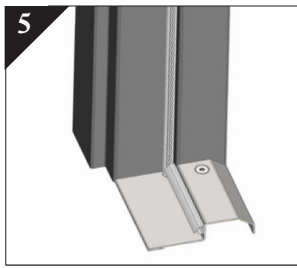
Apply pressure to fit the strip hooks into the recess of the header.



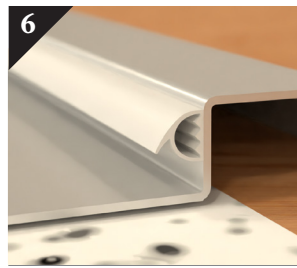
The sides are to be mounted from top - by the head - to bottom - by the threshold. Ensure complete seal where the edges meet.



Apply pressure to fit the strip ridges into the recess of the jambs.



The seal strip is attached facing the vertical edge of the threshold, where the door faces the threshold. Read step 6 before attaching.



Place the strip by the threshold (called a D-seal1 with wing) as high and as close to the stop-side edge of the threshold as possible. Attach just below the rounded edge.

Non applicable when flat threshold is used.

View installation

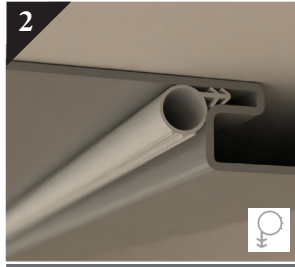


Scan the QR-code to view a Swedish video of the complete installation.

Sealing strips - double door



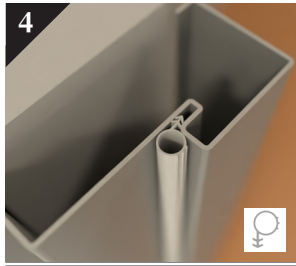
Sealant strips are attached to the head lengthwise between the inside edges of the frame.



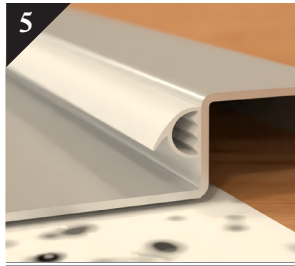
Apply preasure to fit the strip hooks into the recess of the head.



The sides are to be mounted from top - by the head - to bottom - by the threshold. Ensure complete seal where the edges meet.

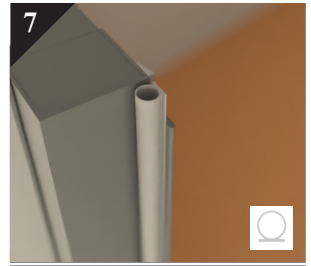


Apply preasure to fit the strip ridges into the recess of the jambs.

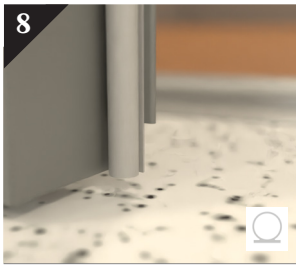


Place the strip by the threshold (called a D-seal with wing) as high and as close to the stop-side edge of the threshold as possible. Attach just below the rounded edge.

Non applicable when flat threshold is used.



Attach the Omega-strip on the stop-side of the passive door panel. The seal needs to overlap by 15 mm.



The seal also needs to overlap by 15 mm at the bottom.

View installation



Scan the QR-code to view a Swedish video of the complete installation.

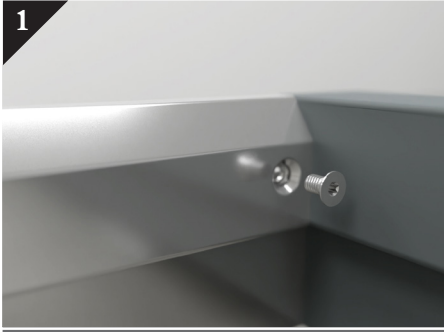


DISASSEMBLED FRAME

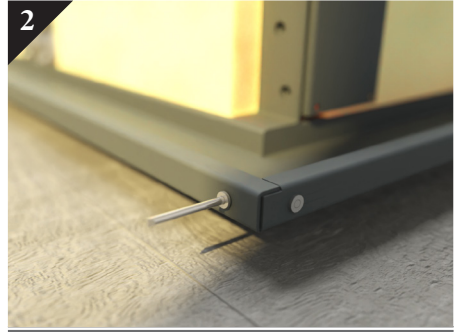


Page 11

Applies to double doors

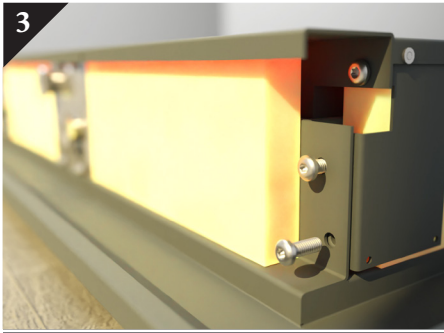


Fasten threshold to jambs by attaching the screws from the start-kit in each end.



Fasten header between the two jambs by using pop rivets.

Frame C head does not require rivets.



Fasten the head with three additional screws in each end.



Frame is ready to be mounted in wall opening.

View installation

Scan the QR-code to view a Swedish video of the complete installation.



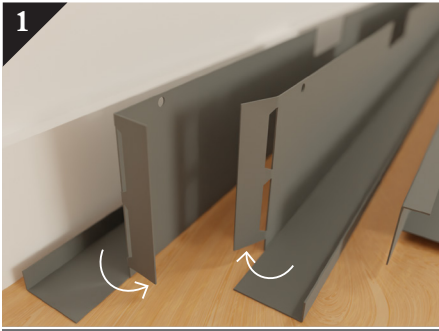


COUNTER FRAME

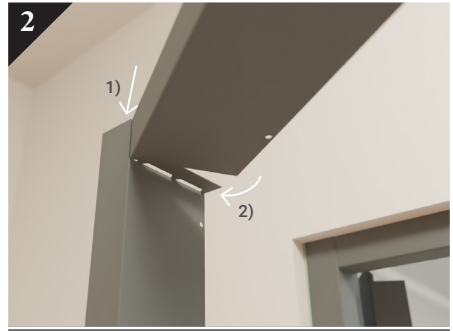


Page 13

Applies to frame A



Begin by folding the upper tabs of the two side pieces in a 90° angle, making them point inward.

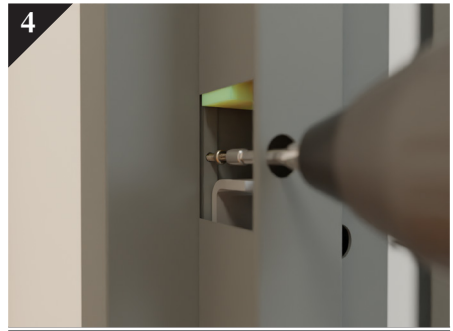


Attach the sides to the head counter frame

- 1) Insert the tab on the header between the wall and the side piece.
- 2) Adjust the header so the folded tab of the side piece overlaps the top piece.



Mount the counter frame in the wall opening around the door frame.



Using a screwdriver with an extended bit holder, attach with the supplied screws into the holes in the gauge.
(The picture shows a cross-section)



Attach through all prebored holes in the clear opening. Finish by inserting the plastic cover into the holes.

View installation

Scan the QR-code to view a Swedish video of the complete installation.



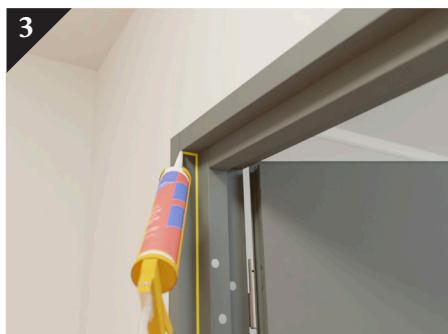
Sealing frame and counter frame



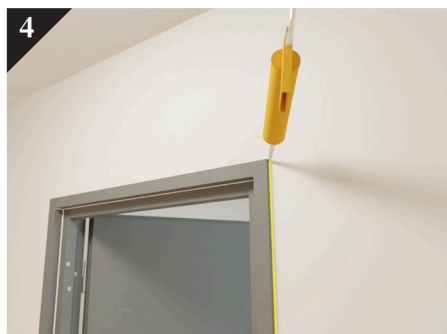
Affix frame and wall surround before applying sealing compound. Apply e.g silicone to the joining faces of the threshold and the floor. Be detailed in the corners between the threshold and the frame.



Make sure to cover the gap between the counter frame and the frame.



Join with silicone where the side piece of the door-frame meets the top piece.



Finish by applying silicone to the joining faces of the wall and the frame.

View installation

Scan the QR-code to view a Swedish video of the complete installation.



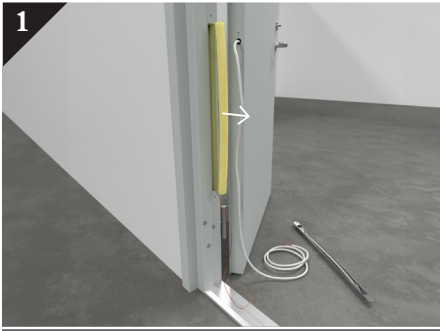


CABLE TRANSFER

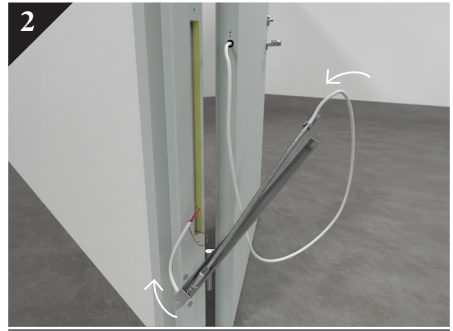


Page 16

Applies to doors & frames with electrical locking mechanisms



Begin by removing the insulation in the frame area prepared for the cable transfer.



Thread the cable through the spring of the cable transfer. Attach the cable to the copper transfer wire prepared in the frame.

TIP: Tie the cable to the copper transfer wire to ensure the cable isn't lost in the frame.



Pull the other end of the copper transfer wire to pull the cable through the frame.



Attach the cable transfer to the frame by using flat-head screws or pop rivets.



Attach the spring to the door by using flat-head screws or pop rivets.

Steel door care

With a few simple cleaning and maintenance steps, you can make your steel door last longer.

CLEANING



Clean doors and frames in pre-painted or foil-coated models with a mild detergent and cloth.



Unpainted stainless steel doors and stainless steel kick plates should be washed with lukewarm water, possibly with gall-soap or mild soap. Do not wash products with abrasives. Note that road dust and sand can act as abrasives.

MAINTENANCE

Recommended checks and services approximately 2 times / year.

Check that the door moves freely and closes easily. Check the fixing of the frame and hinges. Tighten any loose screws.

- If necessary, the door leaf can be adjusted in height with the Allen screw on the hinge. Reseal the Allen screw with Loctite or equivalent when making adjustments.
- If necessary, lubricate the hinges through the grease hole at the top of the hinge or lift the door panel a few centimetres and insert grease. By lifting and lowering the door panel and then swinging the door to full opening, grease is spread over the entire contact surface of the hinge.
- Obtain the lock manufacturer's maintenance instructions and review the operation of the lock. Lubricate the latch bolts on both sides of the latch.
- Inspections and maintenance should be carried out approximately twice a year.
- On double doors, check the espagnolette alt. the function of the locking mechanism in frame/threshold/floor.
- If the double door has a mechanism that closes and coordinates each door panel, the functionality must be checked. The passive door leaf should close first and second, the active door leaf.
- Check that sealing strips and fire seal are secure and not damaged. Replace if necessary and only use original parts from Hellbergs to maintain the properties and potential rating of the door.
- Obtain the hardware manufacturer's care instructions and review the door's hardware in general.

*Depending on the door setting and frequency of use, service and maintenance may need to be performed more frequently.
If you would like further information about cleaning and maintenance please contact info@hellbergs.se*

STEEL DOORS FOR GENERATIONS

Since the 1950's, we've been manufacturing a wide range of rated steel doors such as fire-, security- and acoustic doors as well as, apartment doors for internal and external use, hatches and stainless steel doors.

We offer a wide range of standard and customizable solutions



HELLBERGS

Hellbergs Dörrar i Mellerud AB
info@hellbergs.se | www.hellbergs.se

Head office and factory in Mellerud
+46(0)530-400 00 | Långgatan 63, 464 33 Mellerud, Sweden
Sales office and warehouse in Lund
+46(0)46-654 49 40 | Höstbruksvägen 14 226 60 Lund, Sweden